



EDP-700

Gen - Set

TECHNICAL DATA SHEET

Engine Specifications

Manufacture	Perkins
Engine Model	2806A-E18TAG2
No. of Cylinders	6 vertical in-line
Cycle	4 strokes
Aspiration	Turbocharged After cooled
Cooling Method	Water Cooled
Governing Type	Electronic
Governing Class	G2- ISO 8528 Part 1
Compression Ratio	14.5:1
Displacement	18.1 L
Bore/Stroke	145 x 183 mm
Dynamic Charging Alternator	70 AMP, 24V

Alternator Specifications

Manufacture	Leroy Somer
Alternator Model	TAL-047-F
Number of Poles	4
Number of winding leads	6
Type of Bearing	Single Bearing
Ingress Protection Rating	IP 23
Insulation Class	Cont. H – 125/40° C
Excitation System	Self-Excited
AVR	R150

Output Rating

Prime		Standby	
1500 RPM - 50 Hz , 400 V , 3Ph			
520 Kw	650 Kva	560 Kw	700 Kva
1800 RPM – 60 Hz , 480 V , 3Ph			
600 Kw	700 Kva	660 Kw	700 Kva



GENERAL SPECIFICATIONS

Rating:

- Prime Rating:**
 Unlimited hours usage, with an average load factor of 80% over each 24 hour period. 10% overload is available for 1 hour in every 12 hours operation. Overload is permitted on standby power.
- Standby Rating:**
 Limited to 500 hours annual usage, with an average load factor of 80% of the published standby power rating over each 24 hour period. Up to 300 hours of annual usage may be run continuously. No overload is permitted on standby power.

Engine:

Perkins engine

Alternator:

Brushless AC alternator

Circuit Breaker:

3 Pole LS MCCB





Control System



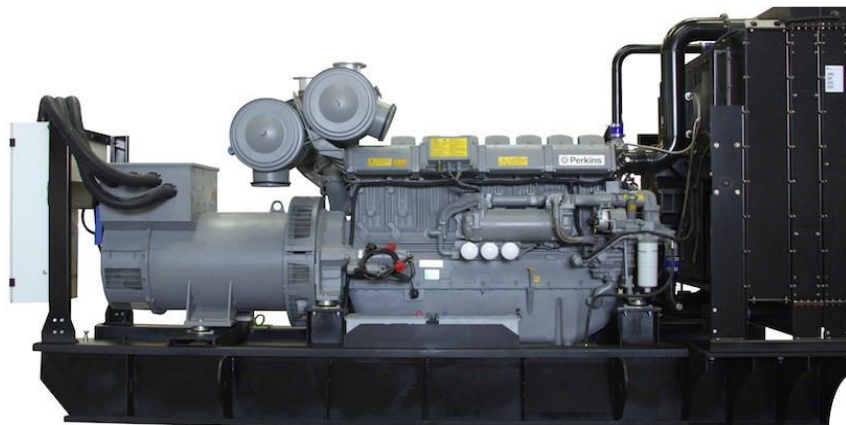
DSE 7320 MKII

AUTO STAR &
AUTO MAINS
FAILURE

- Large back-lit text display
- Multiple display languages
- DSENet® expansion compatible
- Data logging facility
- Fully configurable via PC using USB communication
- Front panel configuration
- Efficient power save mode
- 3 phase generator sensing
- Accumulated power monitoring (kW h, kVA h, kVAR h)
- Generator/load current monitoring and protection
- IP65 rating (with optional gasket) offers increased resistance to water ingress
- Breaker control via fascia buttons
- Generator overload protection (kW)
- Breaker control via fascia buttons
- Fuel and start outputs, configurable when using CAN
- 8 configurable DC outputs
- 9 configurable analogue/digital inputs
- Automatically transfers between mains (utility) and generator(DSE 7320MKII only)
- Increased input and output expansion capability via DSENet®
- IP65 rating (with optional gasket) offers increased resistance to water ingress

Dimensions

Type	Length (mm)	Width (mm)	Height (mm)	Fuel Tank (L)	Weight (KG)
Open	4175	1712.5	2375	1210	5785
Close	5925	2305	22532.5	1210	8410



Comply with Standards

ISO 3046, BS 5514, DIN 6271, NEM -MGI, DIN EN, BS 5000, IEC 60034, IEC 60947-2

Acoustic Enclosure Specifications

Enclosure Type	Acoustic & Weather Proof
Drainage	Fuel and Water Drainage Provision
Transportation	Tested Single Point Lifting Facility & Forklift Pockets
Ingress Protection Rating	IP 23
Lifting	ISO Standard Lifting
Canopy RAL Color	TAL 9010
Base frame RAL Color	RAL 9011
Noise Pressure level @ 7m	78 dB @ 7 m

Fuel System

Recommended Fuel	Class A2 Diesel
Fuel Consumption Standby	143 L/hr
Fuel Consumption 100% PRP	132 L/hr
Fuel Consumption 75% PRP	99 L/hr
Fuel Consumption 50% PRP	97 L/hr