



EDC-275

Gen - Set

TECHNICAL DATA SHEET

Engine Specifications

Manufacture	Cummins
Engine Model	6LTAA8.9-G2
No. of Cylinders	6 vertical in-line
Cycle	4 strokes
Aspiration	Turbocharged After Cooled
Cooling Method	Water Cooled
Governing Type	Electronic
Governing Class	G2- ISO 8528 Part 1
Compression Ratio	16.6:1
Displacement	8.9 L
Bore/Stroke	114 x 145 mm
Dynamic Charging Alternator	70 AMP, 24V

Alternator Specifications

Manufacture	Leroy Somer
Alternator Model	TAL-046-D
Number of Poles	4
Number of winding leads	6
Type of Bearing	Single Bearing
Ingress Protection Rating	IP 23
Insulation Class	Cont. H – 125/40° C
Excitation System	Self-Excited
AVR	R150

Output Rating

Prime		Standby	
1500 RPM - 50 Hz , 400 V , 3Ph			
200 Kw	250 Kva	220 Kw	275 Kva
1800 RPM – 60 Hz , 480 V , 3Ph			
180 Kw	225 Kva	200 Kw	250 Kva



GENERAL SPECIFICATIONS

Rating:

- Prime Rating:**
 Unlimited hours usage, with an average load factor of 80% over each 24 hour period. 10% overload is available for 1 hour in every 12 hours operation. Overload is permitted on standby power.
- Standby Rating:**
 Limited to 500 hours annual usage, with an average load factor of 80% of the published standby power rating over each 24 hour period. Up to 300 hours of annual usage may be run continuously. No overload is permitted on standby power.

Engine:

CUMMINS engine

Alternator:

Brushless AC alternator

Circuit Breaker:

3 Pole LS MCCB





Control System



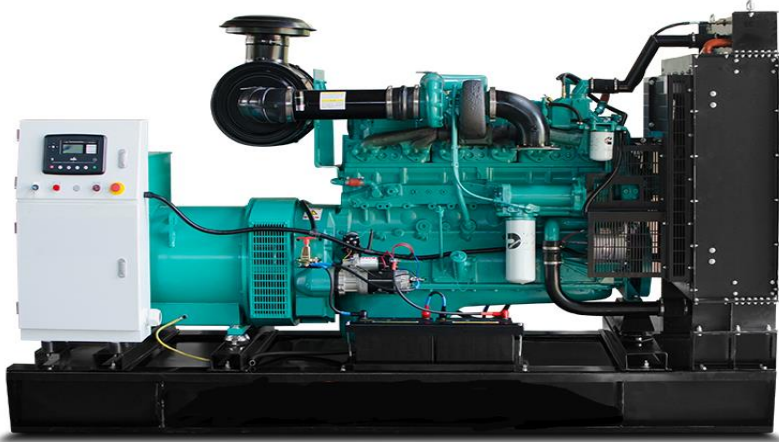
DSE 6120 MKII

AUTO STAR &
AUTO MAINS
FAILURE

- Large back-lit text display
Multiple display languages
- DSENet® expansion compatible
- Data logging facility
- Fully configurable via PC using USB communication
- Front panel configuration
- Efficient power save mode
- 3 phase generator sensing
- Accumulated power monitoring (kW h, kVA h, kVAR h)
- Generator/load current monitoring and protection
- IP65 rating (with optional gasket) offers increased resistance to water ingress
- Generator overload protection (kW)
- Breaker control via fascia buttons
- Fuel and start outputs, configurable when using CAN
- 4 configurable DC outputs
- 4 configurable analogue/digital inputs
- Automatically transfers between mains (utility) and generator(DSE 6120MKII only)
- Increased input and output expansion capability via DSENet®
- IP65 rating (with optional gasket) offers increased resistance to water ingress

Dimensions

Type	Length (mm)	Width (mm)	Height (mm)	Fuel Tank (L)	Weight (KG)
Open	2650	960	1630	500	2000
Close	3600	1330	1065	550	2500



Comply with Standards

ISO 3046, BS 5514, DIN 6271, NEM -MGI, DIN EN, BS 5000, IEC 60034, IEC 60947-2

Acoustic Enclosure Specifications

Enclosure Type	Acoustic & Weather Proof
Drainage	Fuel and Water Drainage Provision
Transportation	Tested Single Point Lifting Facility & Forklift Pockets
Ingress Protection Rating	IP 23
Lifting	ISO Standard Lifting
Canopy RAL Color	TAL 9010
Base frame RAL Color	RAL 9011
Noise Pressure level @ 7m	75 dB @ 7 m

Fuel System

Recommended Fuel	Class A2 Diesel
Fuel Consumption Standby	58 L/hr
Fuel Consumption 100% PRP	53 L/hr
Fuel Consumption 75% PRP	39 L/hr
Fuel Consumption 50% PRP	27 L/hr