



# EDB-825

Gen - Set

## TECHNICAL DATA SHEET

### Engine Specifications

Manufacture	Baudouin
Engine Model	6M33G6D0/S
No. of Cylinders	6 vertical in-line
Cycle	4 strokes
Aspiration	Turbocharged After cooled
Cooling Method	Water Cooled
Governing Type	Electronic
Governing Class	G2- ISO 8528 Part 1
Compression Ratio	15:1
Displacement	19.6 L
Bore/Stroke	150 x 185 mm
Dynamic Charging Alternator	60 AMP, 24V

### Alternator Specifications

Manufacture	Leroy Somer
Alternator Model	TAL-049C
Number of Poles	4
Number of winding leads	6
Type of Bearing	Single Bearing
Ingress Protection Rating	IP 23
Insulation Class	Cont. H – 125/40° C
Excitation System	Self-Excited
AVR	R150

### Output Rating

Prime		Standby	
1800 RPM - 60 Hz , 480 V , 3Ph			
600 Kw	750 Kva	660 Kw	825 Kva

### GENERAL SPECIFICATIONS

#### Rating:

- Prime Rating:**  
Unlimited hours usage, with an average load factor of 80% over each 24 hour period. 10% overload is available for 1 hour in every 12 hours operation. Overload is permitted on standby power.
- Standby Rating:**  
Limited to 500 hours annual usage, with an average load factor of 80% of the published standby power rating over each 24 hour period. Up to 300 hours of annual usage may be run continuously. No overload is permitted on standby power.

#### Engine:

Baudouin engine

#### Alternator:

Brushless AC alternator

#### Circuit Breaker:

3 Pole LS MCCB





## Control System



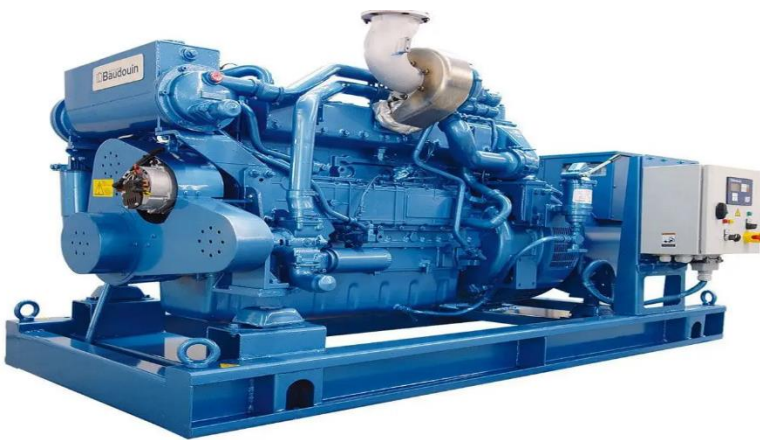
### DSE 6120 MKII

AUTO STAR &  
AUTO MAINS  
FAILURE

- Large back-lit text display  
Multiple display languages
- DSENet® expansion compatible
- Data logging facility
- Fully configurable via PC using USB communication
- Front panel configuration
- Efficient power save mode
- 3 phase generator sensing
- Accumulated power monitoring (kW h, kVA h, kVAr h)
- Generator/load current monitoring and protection
- IP65 rating (with optional gasket) offers increased resistance to water ingress
- Generator overload protection (kW)
- Breaker control via fascia buttons
- Fuel and start outputs, configurable when using CAN
- 4 configurable DC outputs
- 4 configurable analogue/digital inputs
- Automatically transfers between mains (utility) and generator(DSE 6120MKII only)
- Increased input and output expansion capability via DSENet®
- IP65 rating (with optional gasket) offers increased resistance to water ingress

## Dimensions

Type	Length (mm)	Width (mm)	Height (mm)	Fuel Tank (L)	Weight (KG)
Open	2720	1650	2250	900	2971
Close	5000	1230	1857	900	3992



## Comply with Standards

ISO 3046, BS 5514, DIN 6271, NEM -MGI, DIN EN, BS 5000, IEC 60034, IEC 60947-2

## Acoustic Enclosure Specifications

Enclosure Type	Acoustic & Weather Proof
Drainage	Fuel and Water Drainage Provision
Transportation	Tested Single Point Lifting Facility & Forklift Pockets
Ingress Protection Rating	IP 23
Lifting	ISO Standard Lifting
Canopy RAL Color	TAL 9010
Base frame RAL Color	RAL 9011
Noise Pressure level @ 7m	72 dB @ 7 m

## Fuel System

Recommended Fuel	Class A2 Diesel
Fuel Consumption Standby	146.3 L/hr
Fuel Consumption 100% PRP	135.5 L/hr
Fuel Consumption 75% PRP	109.1 L/hr
Fuel Consumption 50% PRP	79.6 L/hr