



EDB-280

Gen - Set

TECHNICAL DATA SHEET

Engine Specifications

Manufacture	Baudouin
Engine Model	6M16G4D0/S
No. of Cylinders	6 vertical in-line
Cycle	4 strokes
Aspiration	Turbocharged After cooled
Cooling Method	Water Cooled
Governing Type	Electronic
Governing Class	G2- ISO 8528 Part 1
Compression Ratio	17:1
Displacement	9.7 L
Bore/Stroke	126 x 130 mm
Dynamic Charging Alternator	60 AMP, 24V

Alternator Specifications

Manufacture	Leroy Somer
Alternator Model	TAL-046D
Number of Poles	4
Number of winding leads	6
Type of Bearing	Single Bearing
Ingress Protection Rating	IP 23
Insulation Class	Cont. H – 125/40° C
Excitation System	Self-Excited
AVR	R150

Output Rating

Prime		Standby	
1800 RPM - 60 Hz , 480 V , 3Ph			
200 Kw	250 Kva	224 Kw	280 Kva

GENERAL SPECIFICATIONS

Rating:

- **Prime Rating:**
Unlimited hours usage, with an average load factor of 80% over each 24 hour period. 10% overload is available for 1 hour in every 12 hours operation. Overload is permitted on standby power.
- **Standby Rating:**
Limited to 500 hours annual usage, with an average load factor of 80% of the published standby power rating over each 24 hour period. Up to 300 hours of annual usage may be run continuously. No overload is permitted on standby power.

Engine:

Baudouin engine

Alternator:

Brushless AC alternator

Circuit Breaker:

3 Pole LS MCCB





Control System



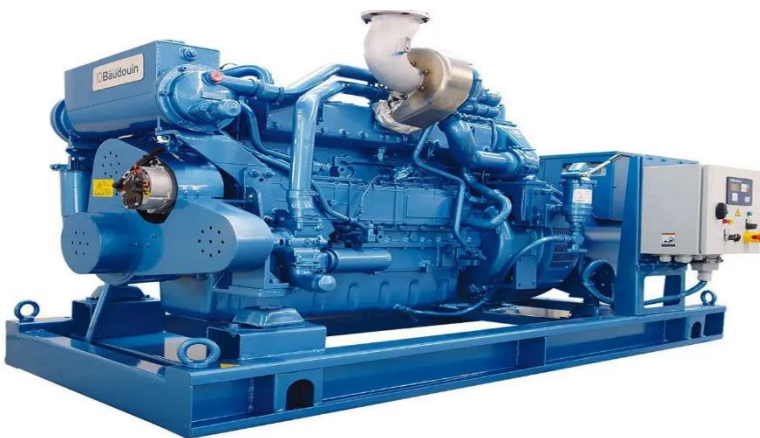
DSE 6120 MKII

AUTO STAR &
AUTO MAINS
FAILURE

- Large back-lit text display
Multiple display languages
- DSENet® expansion compatible
- Data logging facility
- Fully configurable via PC using USB communication
- Front panel configuration
- Efficient power save mode
- 3 phase generator sensing
- Accumulated power monitoring (kW h, kVA h, kVAR h)
- Generator/load current monitoring and protection
- IP65 rating (with optional gasket) offers increased resistance to water ingress
- Generator overload protection (kW)
- Breaker control via fascia buttons
- Fuel and start outputs, configurable when using CAN
- 4 configurable DC outputs
- 4 configurable analogue/digital inputs
- Automatically transfers between mains (utility) and generator(DSE 6120MKII only)
- Increased input and output expansion capability via DSENet®
- IP65 rating (with optional gasket) offers increased resistance to water ingress

Dimensions

Type	Length (mm)	Width (mm)	Height (mm)	Fuel Tank (L)	Weight (KG)
Open	2700	1200	1570	330	2001
Close	3860	1230	1850	350	2535



Comply with Standards

ISO 3046, BS 5514, DIN 6271, NEM -MGI, DIN EN, BS 5000, IEC 60034, IEC 60947-2

Acoustic Enclosure Specifications

Enclosure Type	Acoustic & Weather Proof
Drainage	Fuel and Water Drainage Provision
Transportation	Tested Single Point Lifting Facility & Forklift Pockets
Ingress Protection Rating	IP 23
Lifting	ISO Standard Lifting
Canopy RAL Color	TAL 9010
Base frame RAL Color	RAL 9011
Noise Pressure level @ 7m	70 dB @ 7 m

Fuel System

Recommended Fuel	Class A2 Diesel
Fuel Consumption Standby	46.9 L/hr
Fuel Consumption 100% PRP	43.1 L/hr
Fuel Consumption 75% PRP	32.4 L/hr
Fuel Consumption 50% PRP	22.4 L/hr